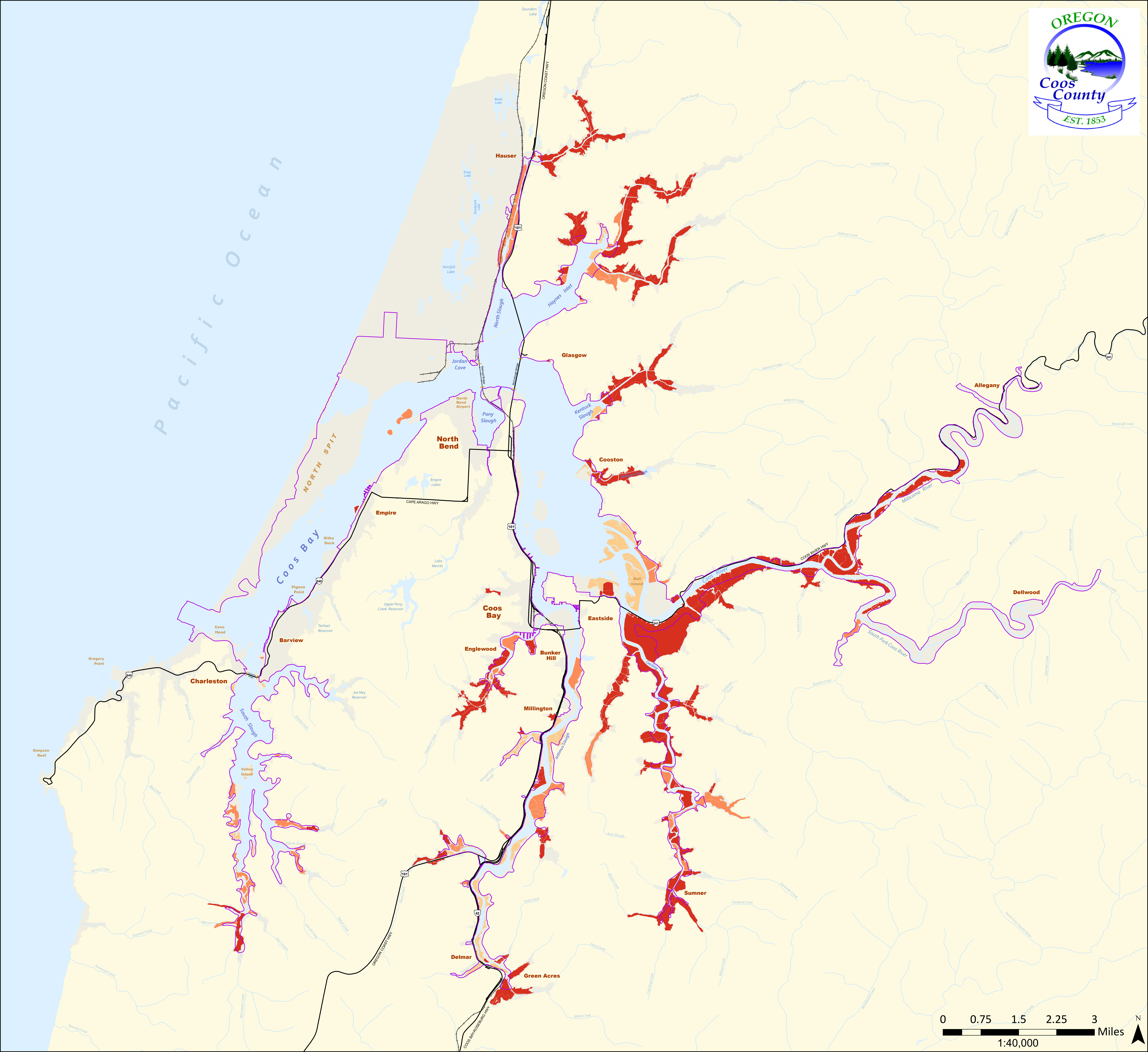


- Dredged Material Disposal Site Type**
- Potential Site
 - Potential Upland
 - At Capacity
 - Old/Not Used
 - CBEMP Boundary
 - Study Area Parcels
 - Railroads
 - Roads

Dredged Material Disposal Sites (2018)

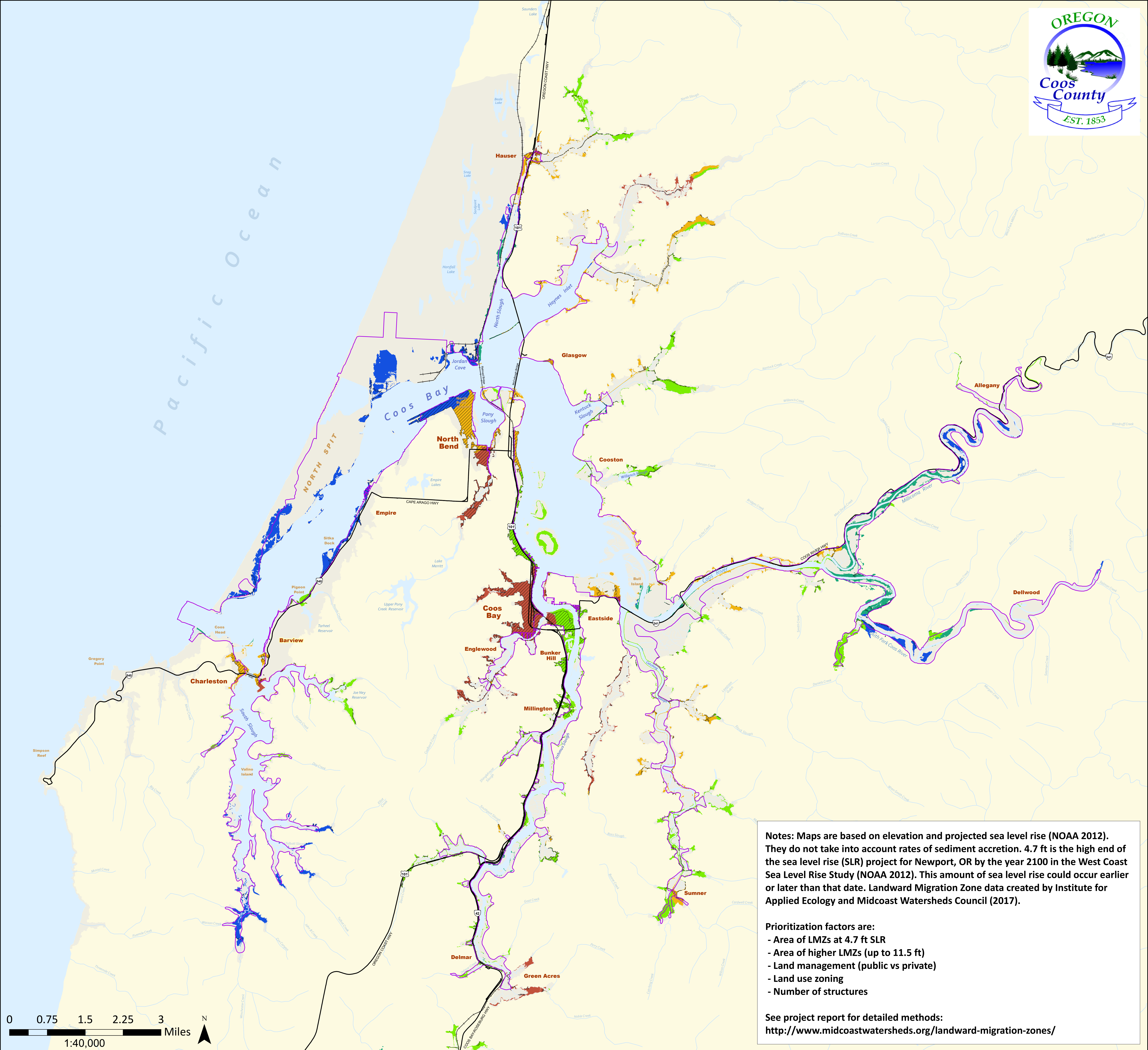


Restoration Sites Inventory (Preliminary)

- Restoration Potential
- Previously Restored (Actively or Passively)
- Least Disturbed (potential reference sites)

- CBEMP Boundary
- Study Area Boundary
- Railroads
- Roads

Map
6.2



Notes: Maps are based on elevation and projected sea level rise (NOAA 2012). They do not take into account rates of sediment accretion. 4.7 ft is the high end of the sea level rise (SLR) project for Newport, OR by the year 2100 in the West Coast Sea Level Rise Study (NOAA 2012). This amount of sea level rise could occur earlier or later than that date. Landward Migration Zone data created by Institute for Applied Ecology and Midcoast Watersheds Council (2017).

- Prioritization factors are:
- Area of LMZs at 4.7 ft SLR
 - Area of higher LMZs (up to 11.5 ft)
 - Land management (public vs private)
 - Land use zoning
 - Number of structures

See project report for detailed methods:
<http://www.midcoastwatersheds.org/landward-migration-zones/>

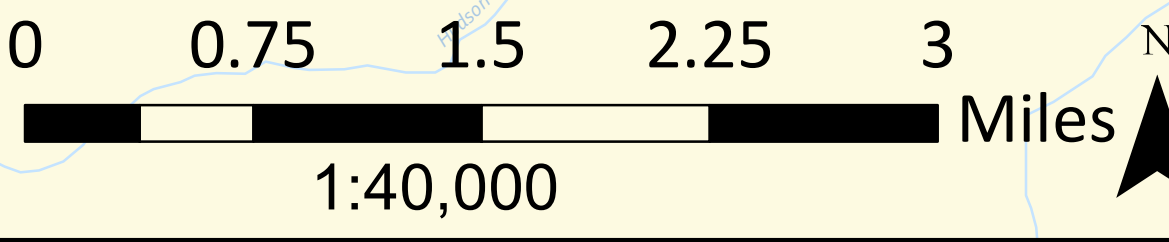
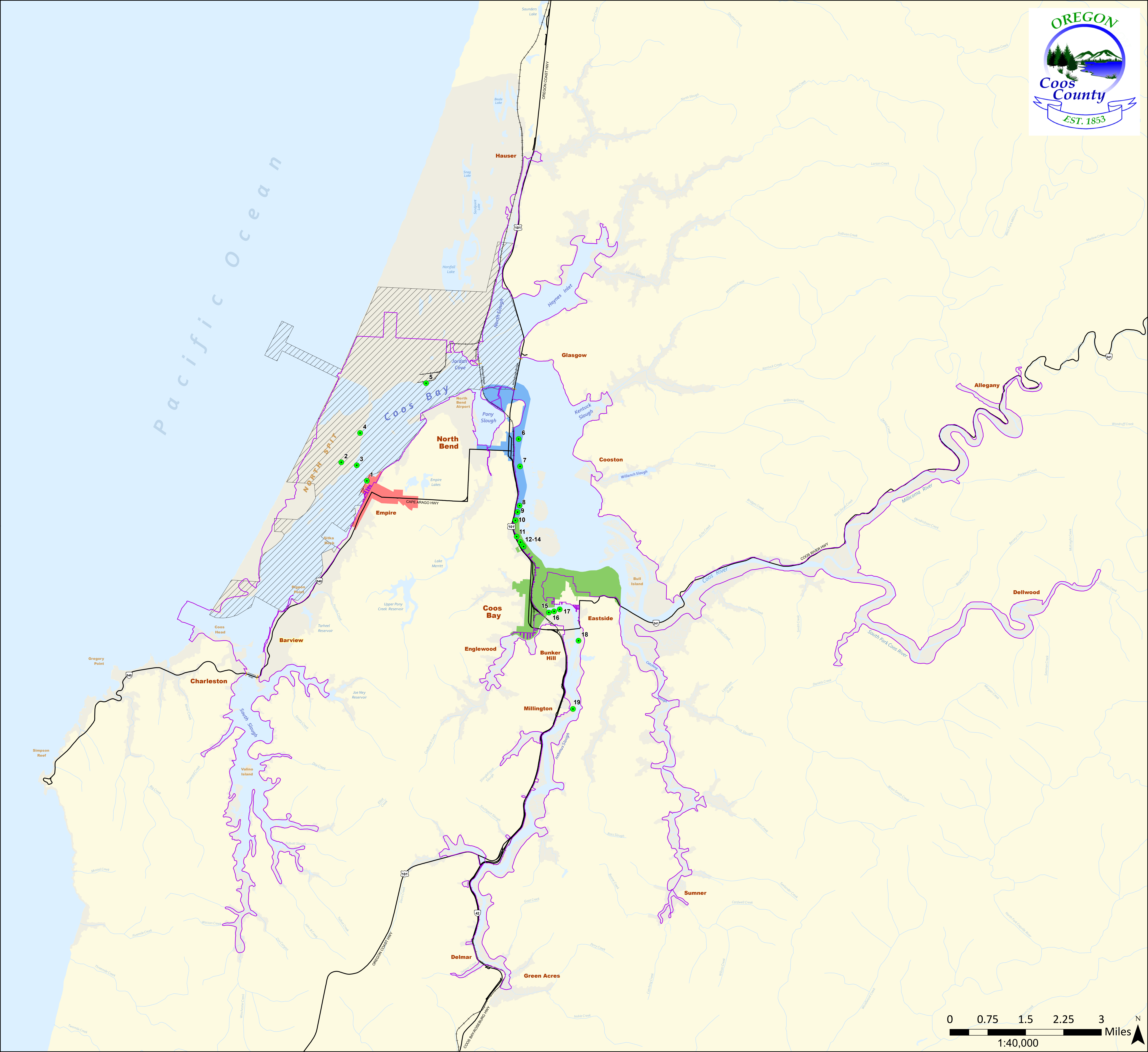
Tidal Wetland LMZ Prioritization (4.7 ft SLR)

Notes:
LMZ = Landward Migration Zone
SLR = Sea Level Rise

Prioritization Scoring Group

- High
- Medium-high
- Medium
- Medium-low
- Low
- LMZs on Impervious Surfaces

- CBEMP Boundary
- Study Area Boundary
- Railroads
- Roads



Urban Renewal Districts

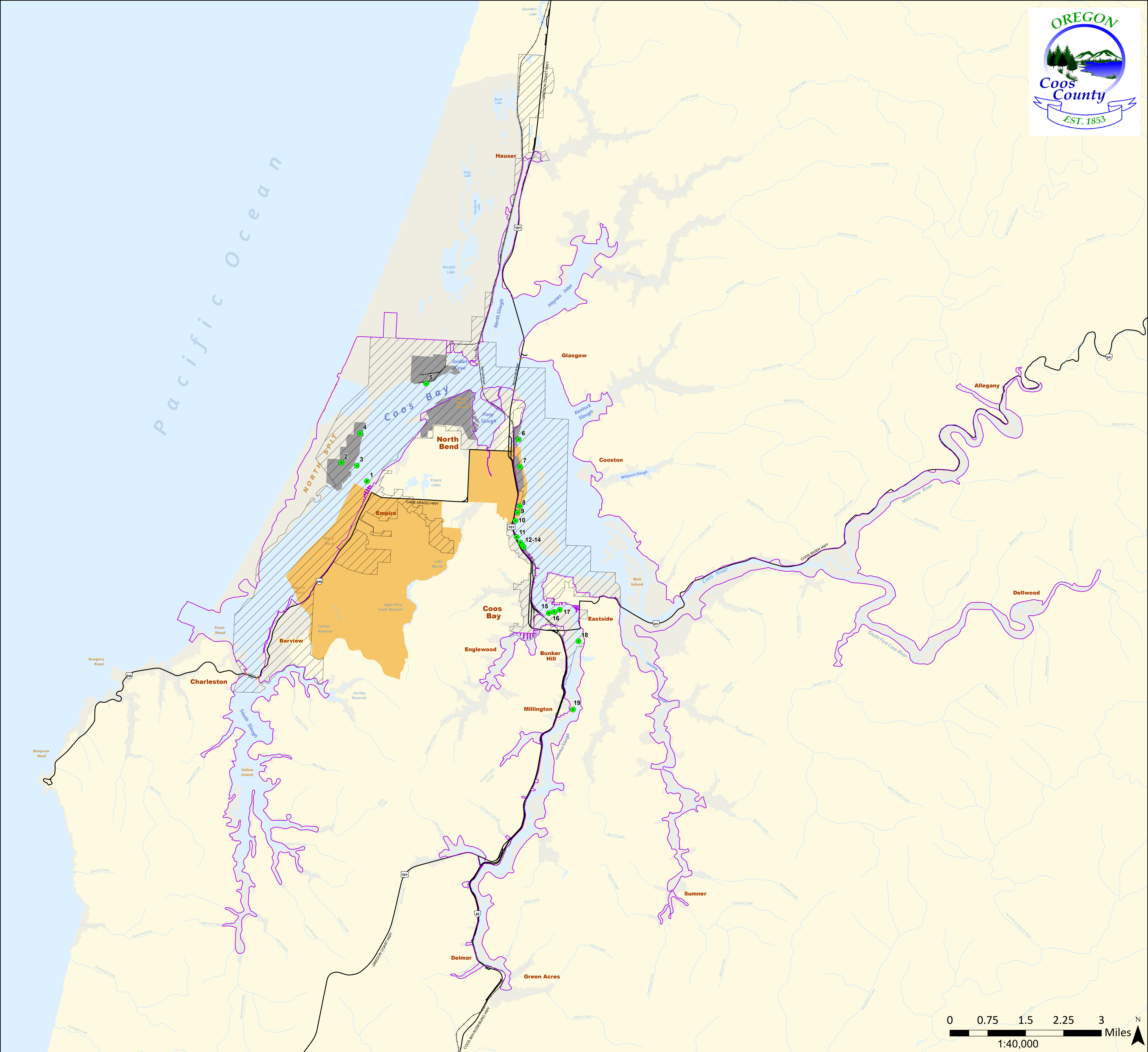
- North Bay
- Coos Bay Downtown
- Coos Bay Empire
- North Bend

Terminals and Docks

- Cape Arago Dock/Sause Bros
- North Bay Marine Industrial Park
- D.B. Western Inc
- Southport Lumber Co.Sawmill & Barge Facility
- Roseburg Forest Products Chip Terminal
- Ocean Terminals Dock
- K2 Terminal
- Tyree Oil, Inc.
- Oregon Chip Terminal
- Bayshore Dock/Sause Bros.
- Citrus Doc
- Dolphin Terminal
- USCG Cutter Orcas
- USACE Port of Coos Bay Moorage
- Pierce Terminal
- Georgia-Pacific
- Coos Bay Docks
- Coastal Fibre Barge Moorage
- Knutson Log Yard Moorage

- CBEMP Boundary
- Study Area Boundary
- Railroads
- Roads

Urban Renewal Districts



Economic Zones

Economic Zones

- Bay Area Enterprise Zone
- Foreign Trade Zones
- Opportunity Zones

Terminals and Docks

- Cape Arago Dock/Sause Bros
- North Bay Marine Industrial Park
- D.B. Western Inc
- Southport Lumber Co.Sawmill & Barge Facility
- Roseburg Forest Products Chip Terminal
- Ocean Terminals Dock
- K2 Terminal
- Tyree Oil, Inc.
- Oregon Chip Terminal
- Bayshore Dock/Sause Bros.
- Citrus Doc
- Dolphin Terminal
- USCG Cutter Orcas
- USACE Port of Coos Bay Moorage
- Pierce Terminal
- Georgia-Pacific
- Coos Bay Docks
- Coastal Fibre Barge Moorage
- Knutson Log Yard Moorage

- CBEMP Boundary
- Study Area Boundary
- Railroads
- Roads