

ADOPT A DRAIN™ DRAIN

ADOPT A DRAIN

ADOPTED DRAINS

WHAT WHY & HOW



UNC
INSTITUTE OF
MARINE SCIENCES

Duke
NICHOLAS SCHOOL OF THE
ENVIRONMENT





Cigarette filters, food wrappers, bottle caps, plastic grocery bags, straws, plastic lids, and foam take-out containers are the **most common pollutants** found in our oceans and on our beaches.

Skip





The majority of plastic marine debris originates from the land, and **storm drains are one common entry point**. Plastic trash easily slips through the drain and ends up in our waterways.

Skip





Adopt a drain! Take good care of it; you're not only **helping researchers quantify** the amount of plastics entering storm drains, you're also **reducing the overall plastic trash** polluting our oceans, threatening wildlife!

Skip





1. **Find and adopt** a drain
2. **Pick up trash** around your drain
3. **Submit your data** for scientific research
4. Earn **kudo points** and climb the leaderboard!

Get started



Skip



LOGIN



ADOPT DRAIN™

ADOPT A DRAIN

ADOPTED DRAINS

WHAT WHY & HOW



UNC
INSTITUTE OF
MARINE SCIENCES

Duke
NICHOLAS SCHOOL OF THE
ENVIRONMENT



Log In

Welcome! Please log in to continue.

Username

Password

Log in




No account yet? Create one!

Forgot password?



Morgans-Drain

Logout

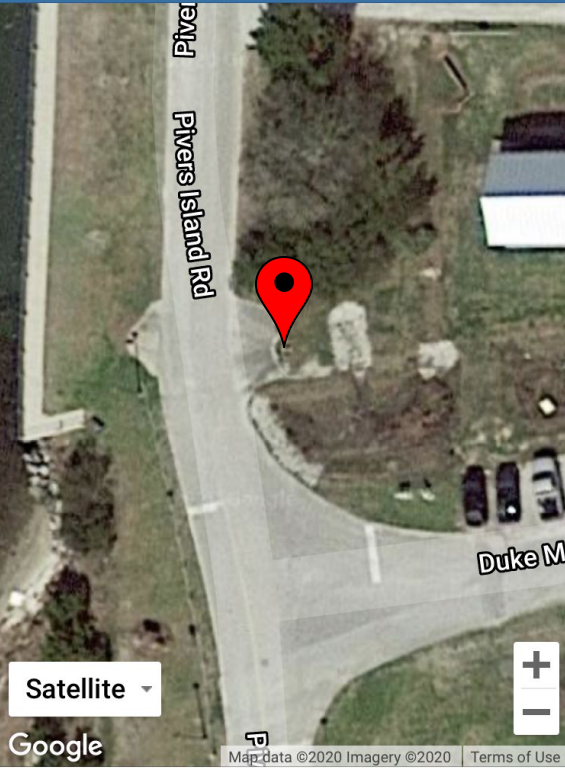
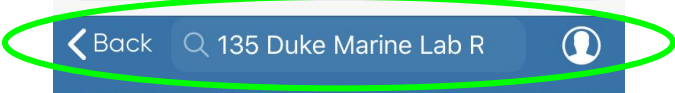
-  My Drains >
-  My Activities >
-  My Groups >

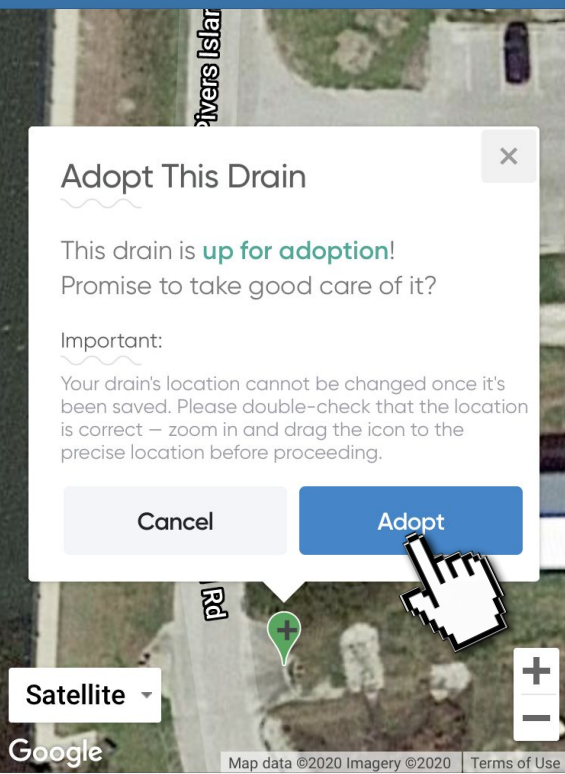


You haven't adopted any drains yet...

Adopt your first drain!







Adopt This Drain

This drain is **up for adoption!**
Promise to take good care of it?

Important:

Your drain's location cannot be changed once it's been saved. Please double-check that the location is correct - zoom in and drag the icon to the precise location before proceeding.

Cancel

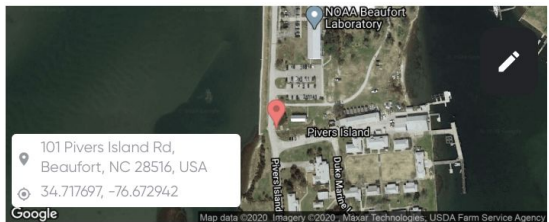
Adopt

Adoption Form

Complete the following adoption form to the best of your ability.

♥ Please help us maintain an inclusive community, follow our [Community Guidelines](#)

👤 This information is public. Do not enter the information of anyone under the age of 13.



Drain Nickname *

- 💡 Give your adopted drain a name!
- 👁️ Don't use personal information.

Verizon LTE 2:40 PM 33%

AA adoptadrain.app

Back Adoption Form

Drain Nickname *

NOAA/DUML

Give your adopted drain a name!
Don't use personal information.

Location Description

Located near the storm water treatment wetland between NOAA and DUML. Across from stop sign and living shorelines sign.

Briefly describe the general location of this drain and surrounding landmarks.
Do not include any personally identifiable information.

Monitoring Frequency *

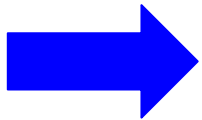
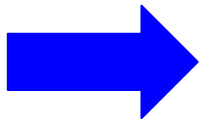
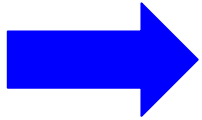
How often will you take care of your drain? (choose one)

Once a week (52 times a year)

Every other week (21 times a year)

Once a month (12 times a year)

< > Share Bookmarks Copy



Don't use personal information.

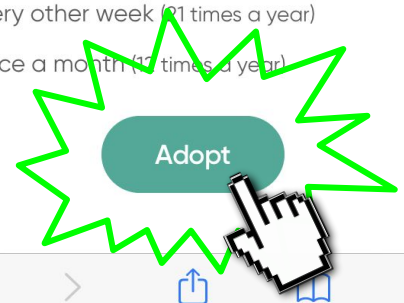
Location Description

Located near the storm water treatment wetland between NOAA and DUML. Across from stop sign and living shorelines sign.

- Briefly describe the general location of this drain and surrounding landmarks.
- Do not include any personally identifiable information.

Monitoring Frequency *

- How often will you take care of your drain? (choose one)
- Once a week (52 times a year)
- Every other week (21 times a year)
- Once a month (12 times a year)



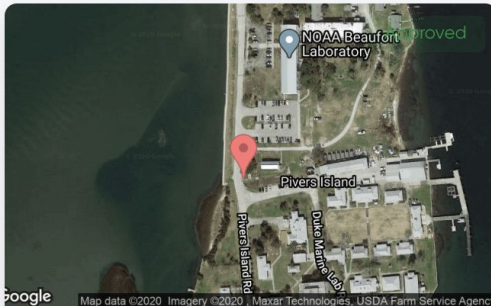


Success!

Your adoption has been approved.

OK





NOAA/DUML

0 Activities

Morg

Biweekly





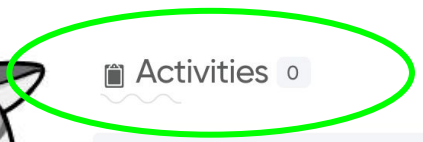
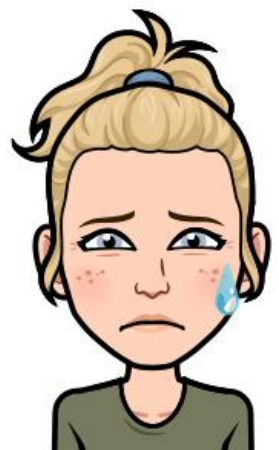
NOAA/DUML

Morgans-Drain
Biweekly
101 Pivers Island Rd, Beaufort, NC 28516, USA

"Located near the storm water ..."

Activities 0

+ Add Activity



Add Activity

Instructions:

- Search a [1m \(3ft\) area](#) around the drain.
- Collect all small trash less than 5cm (2in).
- Assemble and quantify your findings.

Your data are important! Thank you for saving the environment and helping further scientific research.

MOST COMMON ITEMS TO FIND

Common Items:



Plastic Bottles



Bottle Caps



Cigarette Filters

- | +



Forks, Knives,
Spoons

- | +



Plastic Lids

- | +



Plastic Straws

- | +



Food Wrappers



Vape Cartridges

- +



Food Wrappers (candy, chips, etc.)

- +



Other Items

Item Description

- +



TRASH PIECES LESS THAN 5CM (2IN)

Tiny Trash:

TRASH PIECES LESS THAN 5CM (2IN)

Tiny Trash:



Foam Pieces

- +



Glass Pieces

- +



Plastic Pieces

- +

ENVIRONMENTAL INFORMATION

Other Information:



Did you remove leaf litter or other compostable material near the drain?

No Yes



Has it rained since your last data collection?

No Yes

Submit

* The methodology for quantifying and describing marine debris is based on the Ocean Conservancy's methodology for their International Coastal Cleanup.



Plastic Bottles

- +



Bottle Caps

- +



Cigarette Filters

- 1 +



Forks, Knives, Spoons

- +



Plastic Lids

- +



Plastic Straws

- +



Success!

Thank you for taking good care of
your drain ♥

OK

To Do

Adopt a drain:

<https://adoptadrain.app/home>

Collect data

Provide feedback

